

# Product range

iSOLde – The successful tanning lamp program for all, who appreciate the proven quality of Philips products.



**iSOLde**

Professional tanning lamps



# Tanning with pleasure

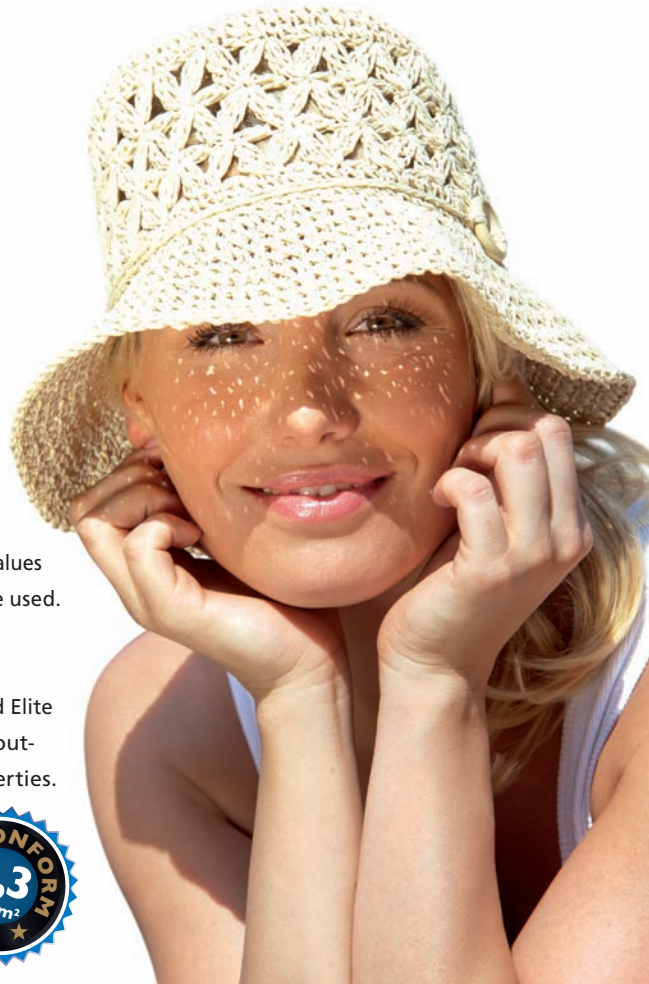
The intelligent iSOLde product line is the result of years of research of medical institutes in collaboration with Philips. The presented selection of UV lamps was specifically designed for the different skin types and applications. Scientific knowledge about the health effects of UV radiation on humans formed the basis for the development of this tanning lamp program. Mature technologies, advanced materials and reliable quality controls ensure trust and security in the application.

## BodyTone by iSOLde

The **Body Tone by iSOLde** Low pressure range provides suitable 0,3 lamps for all popular device. According to EU directive the photo biological irradiance value is limited to 0.3 W/m<sup>2</sup>. New or used equipment can be converted immediately to comply with 0.3 through BodyTone by iSOLde. How? Just compare the UV code on the lamp with the equivalence scope stipulated in the passport of the device. If wattage and

reflector type are matching and X-/Y- values are within the scope the lamps may be used.

**BodyTone** lamps are available in three different series: Regular, Premium und Elite. All three types are characterised by outstanding tanning and wellness properties. Depending on your quality demands further benefits apply to Premium or Elite.



### BodyTone Regular

- Tanning:
  - Naturally and gentle on skin.
  - Enjoyment without compromise
- Qualities of well-being for your skin:
  - Little to no redness
  - No skin irritation
  - Less odour after tanning

„Premium and Elite“ provide the following benefits in addition to “Regular” properties:

### BodyTone Premium

- + 15% better tanning results

### BodyTone Elite

Special patented phosphor blend and specific phosphor coating technology for:

- + 30% better tanning results
- + 1000 hours constant output

### BodyTone Starters

Body Tone starters have been particularly developed for the use with tanning lamps tuned to the frequent on and off cycles. Go for safe and reliable ignition.

- More benefits:
- More than 25% longer life span
  - Min. 6000 Cycles

- Eco-friendly and recyclable concept
- Easy installation and replacement by „click & switch“ system: Remove old starter by placing the pins of the new starter into the notches on top of the old starter body. Switch and replace.



BodyTone Starter <i>designed by Philips</i>	Circuit	Mains voltage range (V)	Wattage range (W)	Packaging configuration	Ordering code
BodyTone Starter 15-20W	Single/Series	110-130 / 220-240	15-20	20 x 25	990334126
BodyTone Starter 25-100W	Single	220-240	25-100	20 x 25 / 1000	990370926 / 990370928
BodyTone Starter S12	Single	220-240	115-140	20 x 25 / 1000	990379226 / 990379228
BodyTone Starter 120-180W	Single	230-240	120-225	20 x 25 / 1000	990348826 / 990348828
BodyTone Starter electronic 15-180W	Single	200-260	15-180	20 x 25	990353226



BodyTone 30 <i>designed by Philips</i>	Lamp Wattage	Reflector	UV-Code	Diameter (mm)	Length (mm)	UVA (W)	UVB/ UVA (%)	Tanning time (mins.)	Useful life (hrs.)	Ordering code
BodyTone F21T5 25W / 30 EU1	25		25-O-14/3,5	16	524	4,7	1,0	16	500	996000141
BodyTone F71T12 100W-R / 30 EU1	100	o	100-R-22/2,5	38	1763	17	0,8	16	800	996000143
BodyTone F71T12 100W-R / 30 EU2	100	o	100-R-24/2,3	38	1763	18	0,8	16	800	996000144
BodyTone F71T12 100W-R / 30 EU3	100	o	100-R-27/3,1	38	1763	19	0,8	15	800	996000151
BodyTone F71T12 100W-R / 30 EU4	100	o	100-N-30/3,6	38	1763	21	1,0	15	800	996000145
BodyTone F71T12 120W-R / 30 EU1	120	o	120-R-19/2,0	38	2000	19	0,7	16	800	996000146
BodyTone F71T12 160W-R / 30 EU1	160	o	160-R-24/2,0	38	1763	22	0,7	14	800	996000148
BodyTone F71T12 160W-R / 30 EU2	160	o	160-R-36/2,4	38	1763	23	0,8	12	800	996000152
BodyTone DYX F71T12 160W-R / 30 EU1	80-200	o	160-R-24/2,0	38	1763	22	0,7	14	800	996000149
BodyTone DYX F71T12 160W-R / 30 EU2	80-200	o	160-R-36/2,4	38	1763	23	0,8	12	800	996000150
BodyTone F79T12 180W-R / 30 EU1	180	o	180-R-36/2,8	38	2000	22,5	0,8	12	800	996000153

BodyTone 35 <i>designed by Philips</i>	Lamp Wattage	Reflector	UV-Code	Diameter (mm)	Length (mm)	UVA (W)	UVB/ UVA (%)	Tanning time (mins.)	Useful life (hrs.)	Ordering code
BodyTone Elite F71T12 100W / 35	100		n.n.	38	1763	32	1,3	18	1000	926521040
BodyTone Elite F71T12 100W-R / 35	100	o	n.n.	38	1763	30	0,8	18	1000	926523440
BodyTone Premium F71T12 100W-R / 35	100	o	n.n.	38	1763	30	0,8	18	800	926610140
BodyTone F24T12 40W / 35	40		40-O-14/2,9	38	596	8,1	0,8	18	800	926533340
BodyTone F24T12 40W-R / 35	40	o	40-R-25/2,5	38	596	7,6	0,8	18	800	926535740
BodyTone F59T12 80W / 35	80		80-O-18/2,9	38	1506	24	1,0	15	800	926541840
BodyTone F59T12 80W-R / 35	80	o	80-R-28/2,6	38	1506	22	1,0	15	800	926548740
BodyTone F71T12 100W / 35	100		100-O-18/3,0	38	1763	31	1,0	15	800	926550040
BodyTone F71T12 100W-R / 35	100	o	100-R-30/2,6	38	1763	27	1,0	15	800	926554840
BodyTone F59T12 140W-R / 35 XPT	140	o	140-R-31/2,9	38	1506	35	0,8	18	800	926565440
BodyTone F71T12 160W-R / 35	160	o	160-R-31/3,6	38	1763	38	0,5	18	800	926567840
BodyTone F71T12 160W-R / 35 XPT	160	o	160-R-31/2,9	38	1763	40	0,5	18	800	926569240
BodyTone F79T12 180W-R / 35 XPT	180	o	180-R-35/3,9	38	2000	45	0,5	18	800	926572240

BodyTone 45 <i>designed by Philips</i>	Lamp Wattage	Reflector	UV-Code	Diameter (mm)	Length (mm)	UVA (W)	UVB/ UVA (%)	Tanning time (mins.)	Useful life (hrs.)	Ordering code
BodyTone Premium F71T12 100W-R / 45	100	o	n.n.	38	1763	28	1,2	13	800	926612540
BodyTone Premium F71T12 160W-R / 45	160	o	n.n.	38	1763	41	1,7	13	800	926614940
BodyTone Premium F71T12 160W-R / 45 XPT	160	o	160-R-43/3,6	38	1763	43	0,7	13	800	926616340
BodyTone Premium F79T12 180W-R / 45 XPT	180	o	n.n.	38	2000	48	0,7	13	800	926618740
BodyTone F59T12 80W-R / 45	80	o	80-R-43/4,8	38	1506	20	1,4	12	800	926577740
BodyTone F71T12 100W / 45	100		100-O-28/5,7	38	1763	27	1,4	12	800	926579140
BodyTone F71T12 100W-R / 45	100	o	100-R-45/5,0	38	1763	26	1,4	12	800	926581440
BodyTone F71T12 160W / 45	160		160-O-66/5,1	38	1763	39	1,4	10	800	926583840
BodyTone F71T12 160W-R / 45	160	o	160-R-49/3,0	38	1763	39	0,8	13	800	926585240
BodyTone F71T12 160W-R / 45 XPT	160	o	160-R-52/2,8	38	1763	44	0,9	13	800	926587640
BodyTone F79T12 180W-R / 45 XPT	180	o	n.n.	38	2000	45	0,7	130	800	926620040

# CLEO by iSOLde

Cleo tanning lamps are characterised by their high efficiency as well as the stable output of every single lamp over the whole life span.

The results are high reliability and a compelling tanning effect.

The Cleo by iSOLde low pressure range is classified in six separate sections whilst complete product lines featuring all popular performances.

## CLEO Advantage

### CLEO Swift

### CLEO Professional / -S

### CLEO Performance / -S

### CLEO Compact / -S

### CLEO Emotions Active Red



**CLEO Advantage, CLEO Swift and CLEO Professional-S** provide very efficient, immediate and long-lasting pigmentation. A beautiful dark complexion can be obtained due to the high UV output. These lamps are particularly designed for short tanning sessions. Cleo Swift feature noticeable higher UVA-output for immediate deep skin darkening.

**CLEO Professional** lamps are marked by their well balanced UVA UVB ratio. They afford excellent bio-positive parameters and therefore are ideally suitable for health care. (Vitamin D3 synthesis, compensation of sunlight deficiency).

**CLEO Performance and CLEO Performance-S** help to achieve instant while gentle tanning effect. The lamps are ideal for people who enjoy extended tanning sessions. They also give long lasting tan to sensitive skin.



## CLEO Compact and CLEO Compact S

are the product lines comprising short while extremely powerful tanning lamps. They are particularly designed for low pressure facial tanners.

**CLEO Emotions Active Red** are tanning lamps emitting energising red. They boost the metabolism and provide a deep tan.

## CLEO HPA high pressure lamps

The Cleo by iSOLde high pressure range comprises lamps of high output and first class performance. The Gold coating on either end guarantees ideal operating temperature within very short period.

**CLEO HPA** high pressure lamps are designed for use with Cleo and Body tone low pressure lamps. The range covers nearly the complete spectrum of performances and socket types affording high flexibility and attractive choice: All Cleo HPA high pressure lamps feature a life span of 800 hours.





<b>CLEO Advantage</b> <i>designed by Philips</i>	Lamp Wattage	Reflector	UV-Code	Diameter (mm)	Length (mm)	UVA (W)	UVB/ UVA (%)	Tanning time (mins.)	Useful life (hrs.)	Ordering code
CLEO Advantage F59T12 80W-R	80	o	80-R-95/8,8	38	1506	22	3,1	7	800	986619640
CLEO Advantage F71T12 100W	100		100-O-55/10,8	38	1763	30	3,1	7	800	986566340
CLEO Advantage F71T12 100W-R	100	o	100-R-90/9,6	38	1763	30	3,1	7	800	971036940
CLEO Advantage F79T12 100W-R	100	o	100-R-71/9,2	38	2000	31	3,1	7	800	996000121
CLEO Advantage F59T12 140W-R XPT	140	o	140-R-156/9,9	38	1506	34	3,1	6	800	926313140
CLEO Advantage F71T12 160W-R	160	o	160-R-150/9,3	38	1763	36	3,1	5	800	971038340
CLEO Advantage F71T12 160W-R XPT	160	o	160-R-150/10,0	38	1763	42	3,1	5	800	926295040
CLEO Advantage F79T12 235W-R XPT	225 max	o	225-R-173/10,8	38	2000	56	3,1	4	800	995088840

<b>CLEO Swift</b> <i>designed by Philips</i>	Lamp Wattage	Reflector	UV-Code	Diameter (mm)	Length (mm)	UVA (W)	UVB/ UVA (%)	Tanning time (mins.)	Useful life (hrs.)	Ordering code
CLEO Swift F59T12 80W-R	80	o	80-R-57/5,4	38	1506	24	1,8	8	800	986571740
CLEO Swift F71T12 100W	100		100-O-36/6,2	38	1763	31	2,0	8	800	986728540
CLEO Swift F71T12 100W-R	100	o	100-R-61/5,5	38	1763	31	1,8	8	800	986617240
CLEO Swift F79T12 100W-R	100	o	100-R-48/5,7	38	2000	32	1,9	8	800	996000122
CLEO Swift F59T12 140W-R XPT	140	o	140-R-115/6,4	38	1506	39	2,0	7	800	926309440
CLEO Swift F71T12 160W-R	160	o	160-R-114/6,9	38	1763	44	2,0	6	800	986567040
CLEO Swift F71T12 160W-R XPT	160	o	160-R-115/6,4	38	1763	46	2,0	6	800	926266040
CLEO Swift F79T12 180W-R XPT	180	o	180-R-112/6,4	38	2000	51	2,0	6	800	926435040
CLEO Swift F79T12 200W-R XPT	200	o	200-R-130/6,4	38	2000	53	2,0	6	800	954135240
CLEO Swift F71T12 200W-R XPT	200	o	n.n.	38	1763	48	2,0	6	800	989107540
CLEO Swift F79T12 225W-R XPT	225	o	225-R-132/7,3	38	2000	59	2,0	5	800	995039040

<b>CLEO Professional S</b> <i>designed by Philips</i>	Lamp Wattage	Reflector	UV-Code	Diameter (mm)	Length (mm)	UVA (W)	UVB/ UVA (%)	Tanning time (mins.)	Useful life (hrs.)	Ordering code
CLEO Professional S F59T12 80W-R	80	o	n.n.	38	1506	20	2,4	10	800	964165640
CLEO Professional S F71T12 100W	100		100-O-31/6,8	38	1763	27	2,4	10	800	964169440
CLEO Professional S F71T12 100W-R	100	o	100-R-50/6,0	38	1763	26	2,4	10	800	964171740
CLEO Professional S F59T12 140W-R	140	o	n.n.	38	1506	32	2,4	8	800	964111340
CLEO Professional S F71T12 160W-R	160	o	160-R-75/6,2	38	1763	36	2,4	8	800	964113740

<b>CLEO Professional</b> <i>designed by Philips</i>	Lamp Wattage	Reflector	UV-Code	Diameter (mm)	Length (mm)	UVA (W)	UVB/ UVA (%)	Tanning time (mins.)	Useful life (hrs.)	Ordering code
CLEO Professional F59T12 80W-R	80	o	80-R-45/5,0	38	1506	20	1,4	12	800	962218140
CLEO Professional F71T12 100W	100		100-O-28/5,7	38	1763	27	1,4	12	800	962219840
CLEO Professional F71T12 100W-R	100	o	100-R-45/5,0	38	1763	26	1,4	12	800	962220440
CLEO Professional F59T12 140W-R	140	o	140-R-65/4,9	38	1506	32	1,4	10	800	962940140
CLEO Professional F71T12 160W-R	160	o	160-R-71/5,6	38	1763	37	1,4	10	800	962934040



CLEO Performance S <i>designed by Philips</i>	Lamp Wattage	Reflector o	UV-Code	Diameter (mm)	Length (mm)	Ordering code
CLEO Performance S F59T12 80W	80		80-O-26/6,3	38	1506	964423740
CLEO Performance S F59T12 80W-R	80	o	80-R-28/2,6	38	1506	964425140
CLEO Performance S F71T12 100W	100		100-O-18/3,0	38	1763	964404640
CLEO Performance S F71T12 100W-R	100	o	100-R-30/2,6	38	1763	964406040

CLEO Performance <i>designed by Philips</i>	Lamp Wattage	Reflector o	UV-Code	Diameter (mm)	Length (mm)	Ordering code
CLEO Performance F24T12 40W	40		40-O 14/2,9	38	596	962830540
CLEO Performance F24T12 40W-R	40	o	40-R-25/2,5	38	596	962835040
CLEO Performance F59T12 80W	80		80-O-17/2,9	38	1506	962831240
CLEO Performance F59T12 80W-R	80	o	80-R-27/2,4	38	1506	962836740
CLEO Performance F71T12 100W	100		100-O-17/2,6	38	1763	962833640
CLEO Performance F71T12 100W-R	100	o	100-R-29/2,4	38	1763	962838140
CLEO Performance F71T12 160W-R	160	o	160-R-49/3,0	38	1763	963641640

CLEO Compact S <i>designed by Philips</i>	Lamp Wattage	Reflector o	UV-Code	Diameter (mm)	Length (mm)	UVA (W)	UVB/ UVA (%)	Tanning time (mins.)	Useful life (hrs.)	Ordering code
CLEO Compact S 25W	25		25-O-23/6,5	16	524	4,7	2,0	12	500	962979127
CLEO Compact S 25W-R	25	o	25-R-34/6,7	16	524	4,7	2,0	12	500	963369927

CLEO Compact <i>designed by Philips</i>	Lamp Wattage	Reflector o	UV-Code	Diameter (mm)	Length (mm)	UVA (W)	UVB/ UVA (%)	Tanning time (mins.)	Useful life (hrs.)	Ordering code
CLEO Compact 15W	15		15-O-9/3,7	16	295	2,3	1,0	16	500	971646027
CLEO Compact 20W	20		20-O-12/3,1	28	444	3,8	1,0	16	500	961205240
CLEO Compact 25W	25		25-O-14/3,5	16	524	4,7	1,0	16	500	961911227
CLEO Compact PLL 36W	36		36-O-33/4,6	18	410	9,4	1,0	16	500	995325440

CLEO Emotions Active Red <i>designed by Philips</i>	Lamp Wattage	Reflector o	UV-Code	Diameter (mm)	Length (mm)	UVA (W)	UVB/ UVA (%)	Tanning time (mins.)	Useful life (hrs.)	Ordering code
CLEO Emot. Active Red F71T12 160W-R XPT	160	o	160-R-139/9,8	38	1763	40	2,5	5	800	961202140
CLEO Emot. Active Red F79T12 225W-R XPT	225	o	225-R-156/10,1	38	2000	58	2,5	4	800	995086440



<b>CLEO HPA designed by Philips</b>	<b>Lamp Power (W)</b>	<b>Main Voltage (V)</b>	<b>Cap/Base</b>	<b>UVA (W) (Radiation 1 hrs. IEC)</b>	<b>Total Length (mm)</b>	<b>Useful life (hrs.)</b>	<b>Ordering code</b>
CLEO HPA Synergy 300W	300	230	R7S (clip-in) / R7S	64	104	800	920650329
CLEO HPA 400 SE	400	230	Single Ended / GY 9.5	82	113	800	919822845
CLEO HPA 400 S	400	230	R7S (clip-in) / R7S	87	118	800	919220245
CLEO HPA 400/30 S	400	230	R7S (clip-in) / R7S	94	104	800	919159545
CLEO HPA 400/30 S L	400	230	R7S (clip-in) / R7S	94	106	800	913138841
CLEO HPA 400/30 SD	400	230	R7S (clip-in) / R7S	94	104	800	919165645
CLEO HPA 400/30 SD L	400	230	R7S (clip-in) / R7S	94	106	800	913137141
CLEO HPA 400/30 SDC	400	230	Cable / Ferrule	94	96 + 2	800	919300145
CLEO HPA 250-500 SE	250 / 500	230	Single Ended / GY 9.5	42 / 123	113	800	913134045
CLEO HPA 250-500/30 SD	250 / 500	230	R7S (clip-in) / R7S	51 / 125	104	800	920184345
CLEO HPA 250-500/30 SD L	250 / 500	230	R7S (clip-in) / R7S	51 / 125	106	800	913132641
CLEO HPA Flexpower 400-600W	400 / 600	230	R7S (clip-in) / R7S	87	118	800	919798629
CLEO HPA 610 FX	600	230	Contact plate 600	141	141 ± 1	800	921378541
CLEO HPA 620 FX	600	230	Cable / Cover	141	158 ± 1,5	800	921376145
CLEO HPA 630 FX	600	230	Contact pin 600	141	141 ± 1	800	921380841
CLEO HPA 640 SE FX	400 / 600	230	Single Ended / GY 9.5	94 / 141	113; from cap max 109	800	914211755

<b>CLEO HPA High Wattage designed by Philips</b>	<b>Lamp Power (W)</b>	<b>Main Voltage (V)</b>	<b>Cap/Base</b>	<b>UVA (W) (Radiation 1 hrs. IEC)</b>	<b>Total Length (mm)</b>	<b>Useful life (hrs.)</b>	<b>Ordering code</b>
CLEO HPA 700 S FX	700	230	R7S (clip-in) / R7S	187	117,9	800	920669541
CLEO HPA 700/800 FX C	700	230	Cable / Cover	187	126,5 ± 2	800	920674931
CLEO HPA 1000 SE	1000	230	Single Ended / Cap GQ 9.5	245	138 (max)	800	919930075
CLEO HPA 1000 SE FX	1000	230	Single Ended / GQ 9.5	245	138 (max)	800	913129645
CLEO HPA 1000 S	1000	230	Cable / Ferrule	243	147 ± 2	800	919109045
CLEO HPA 1000 FX	1000	230	Cable / C14X Ferrule	243	147 ± 2	800	938666545
CLEO HPA 1010 SE FX	1000	230	Single Ended / Cap GQ 9.5	245	109,5 (max)	800	938670245
CLEO HPA 1040 SE FX	1000	230	Single Ended Key / GA 9.5	245	124 (max)	800	913128945
CLEO HPA 1200 S	1200	230	Cable / Cover	308	139 ± 2	800	919130445
CLEO HPA 1200 S FX	1200	230	Cable / C10.5 S Cover	308	139 ± 2	800	938668945
CLEO HPA 1200 FX	1200	400	Cable / C10.5 L Cover	308	166 ± 2	800	913103645
CLEO HPA 1220 FX	1200	400	Cable / Cover	317	137 ± 3	800	913133345
CLEO HPA 2000 S	2000	400	Cable / C14X Ferrule	550	177 ± 2	800	919127445
CLEO HPA 2000 S FX	2000	400	Cable / C14X Ferrule	550	177 ± 2	800	938667245
CLEO HPA 2020 S	2000	400	Cable / C10.5 L Cover	537	185 ± 3	800	919535745
CLEO HPA 2020 S FX	2000	400	Cable / C10.5 L Cover	537	185 ± 3	800	938665845
CLEO HPA 2040 S FX	2000	230	Cable / C10.5 L Cover	576	171 ± 3	800	920671845

# iSOLde

## Professional tanning lamps

iSOLde Licht GmbH is your exclusive distributor of tanning lamps designed by Philips.

iSOLde has taken over the renowned Philips tanning range at the beginning of the year 2009 and ever since is leading the 25-year long success story of the Philips brand into a bright future.

**iSOLde Licht GmbH**  
**Kölner Straße 8**  
**D-70376 Stuttgart**  
**Phone +49 (0)711 / 54004-0**  
**Fax +49 (0)711 / 54004-55**  
**info@isoldelicht.de**  
**www.isoldelicht.com**



**Warning:** DANGER - Ultraviolet radiation. Important instructions. Avoid overexposure. As with natural sunlight, overexposure can cause eye and skin injury and allergic reactions. Repeated exposure may cause premature aging of the skin and skin cancer. WEAR PROTECTIVE EYEWEAR; FAILURE TO MAY RESULT IN SEVERE BURNS OR LONG-TERM INJURY TO THE EYES. Medications or cosmetics may increase your sensitivity to the ultraviolet radiation. Consult physician before using sunlamp if you use medications or have a history of skin problems or believe yourself to be especially sensitive to sunlight. If you do not tan in the sun, you are unlikely to tan from the use of this product.

**All rights reserved.** Reproduction in whole or in part is prohibited without the prior written consent of the copyright owner. The information presented in this document does not form part of any quotation or contract, is believed to be accurate and reliable and may be changed without notice. No liability will be accepted by the publisher for any consequence of its use. Publication thereof does not convey nor imply any license under patent- or other industrial or intellectual property rights.